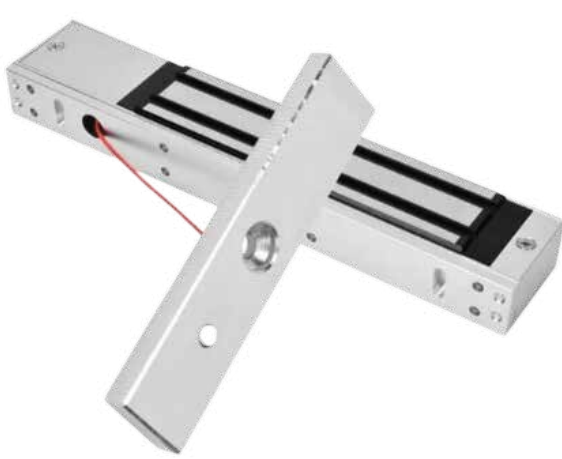


# EB-600-SL



## EB-600-SL SINGLE LEAF NON-MONITORED ELECTRO MAGNETIC LOCK

EBSS Single leaf Non-Monitored Electro Magnetic Lock operates with the holding force 600LBS with Red LED Indication.



### KEY FEATURES

- Operating Voltage** : Power DC 12V
- Suitable for** : Wooden door, Glass door, Metal door, Fireproof door. Etc.
- Holding Force** : 600 LBS
- Security type** : Fail safe mode (Unlock when power off)
- Housing** : Anodized aluminium housing
- Led** : Built-in Red LED Status LED (Red - Locked & Unlocked)
- Operating Temperature** : -10 to +55 Degrees

